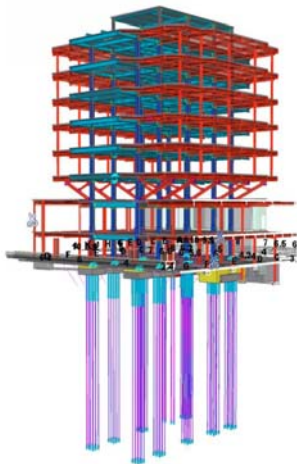


Engineering Seminar

Peter Behnam SE, and Jose A. Sanchez
KPFF Consulting Engineers

**“Performance-Based Seismic Engineering of
Critical Facilities in California”**

The practice of structural engineering for critical facilities in the State of California is well regulated by state agencies and national codes. Practical and innovative solutions are required to meet state regulations that also provide cost effective options to the client. A series of different buildings in the State of California are discussed, including new and existing retrofitted buildings. This presentation will highlight several projects where the performance-based design approach has been used for the design and/or analysis of existing and new buildings. It will include a detailed presentation of a project utilizing performance-based design evaluation by Jose A. Sanchez, a University at Buffalo alumnus.



DATE: Thursday, March 22, 2012

TIME: 11:00AM - 12:30PM EST

LOCATION: 140 Ketter Hall, North Campus, University at Buffalo

WEBCAST URL: [HTTP://CIVIL.ENG.BUFFALO.EDU/WEBCAST/](http://civil.eng.buffalo.edu/webcast/)

TECHNICAL DIFFICULTIES: SEESLWEBCAST@GMAIL.COM

ORGANIZED BY: CSEE-GSA, Student Chapter of EERI at UB, MCEER, and CSEE

Refreshments will be served!

Peter Behnam, SE

Structural Principal

KPFF Consulting Engineers, Los Angeles CA



Mr. Behnam is a principal at KPFF Consulting Engineers, Los Angeles office. He attained his master's in Structural Engineering Mechanics and Materials from UC Berkeley and has 16 years of professional experience in the analysis, design, retrofit, and construction of new and existing commercial, hospital, institutional, and educational facilities with expertise in performance-based seismic engineering and base-isolation. He is a registered structural engineer in the state of California and a certified plan reviewer for the Office of Statewide Health Planning & Development (OSHPD) and Division of State Architect (DSA) and has served as a member on base-isolation peer review committees. He has co-authored papers on the design of both new and retrofitted base-isolation structures and has been a guest lecturer/presenter at SEAOC, USC, & UCLA. Mr. Behnam is personally committed to the training, mentoring, and education of engineers both internally at KPFF as well as in the community via his involvement with voluntary programs such as ACE Mentoring Program, California Student Outreach Program (CAL SOP) and industry sponsored master's thesis programs.

Jose A. Sanchez

KPFF Consulting Engineers, Los Angeles CA



Mr. Jose A. Sanchez is a design engineer at KPFF Consulting Engineers, Los Angeles office. He has been involved in the nonlinear analysis and design of new and existing buildings. He graduated in 2010 from the University at Buffalo with a Master of Science in Structural and Earthquake Engineering and was recipient of the Arthur A. Schomburg Fellowship. As a graduate student he worked in the area of base-isolation focusing in the stability of elastomeric bearings for seismic applications. He served as a graduate research assistant and conducted experimental work on elastomeric bearings and in the seismic qualification of nonstructural components. While a graduate student he also participated as a visiting researcher at the Institute of Engineering Mechanics part of the China Earthquake Administration in Harbin, China. He has also served as a volunteer in the Buffalo-area Engineering Awareness for Minorities (BEAM) program to motivate high schools students to pursue careers in Science and Engineering.