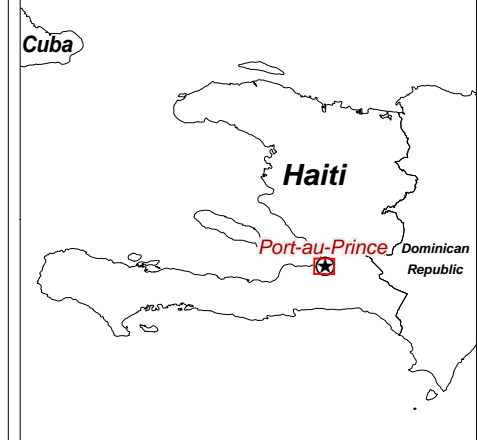
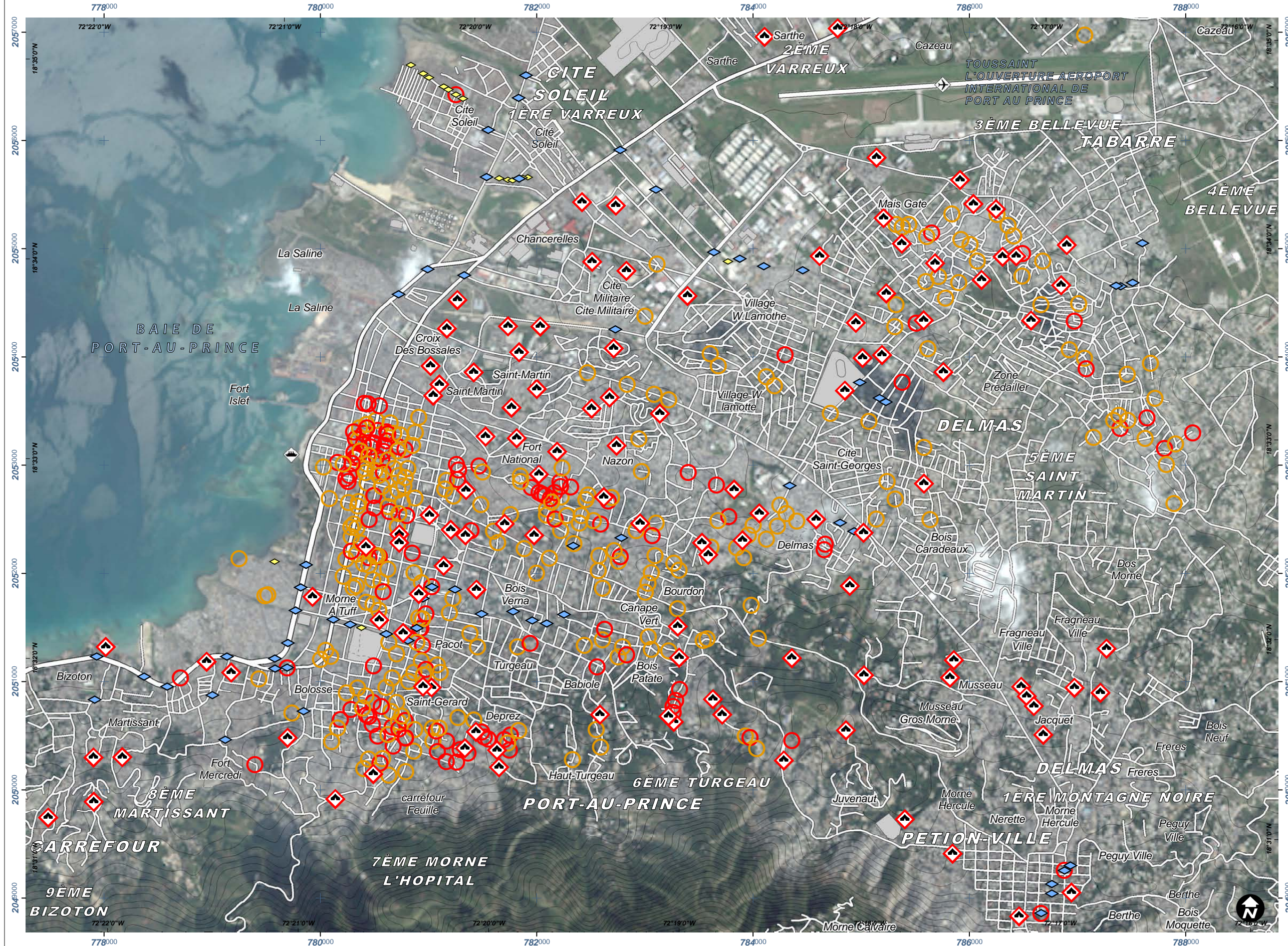


# SATELLITE-IDENTIFIED IDP CONCENTRATIONS, ROAD & BRIDGE OBSTACLES IN CENTRAL PORT-AU-PRINCE, HAITI

Operational Analysis with GeoEYE-1 Data Acquired 12 January 2010 and QuickBird data acquired 4 March 2008

This work was done in support of recorded on 12 January 2010. the international humanitarian This is a preliminary analysis & relief effort in Haiti following the earthquake on 12 January 2010. field. Road and bridge damages Informal IDP sites, bridges and have likely been underestimated. road obstacles have been Please send ground feedback to identified in GeoEye-1 imagery UNITAR / UNOSAT.

**Earthquake**  
7.0M  
14 January 2010  
(21:00:00 UTC)  
Version 1.0  
Glide No:  
EQ-2010-000009-HTI



**Legend**

- Informal IDP Site
- Bridge & Road Obstacles
- Probable Operational Status
- Likely Closed by debris
- Likely Restricted by debris
- Airfield
- Port
- Bridge
- Culvert
- Foot Bridge
- Primary Road
- Secondary Road
- Trail / footpath
- Railroad

**Map Scale for A3: 1:35,000**

0 125 250 500 750 1,000 1,250 1,500 Meters

Satellite Data (1)..... GeoEye-1  
Imagery Dates ..... 12 January 2010  
Resolution ..... 50cm  
Copyright ..... GeoEye 2009  
Satellite Data (2) ..... QuickBird-2  
Imagery Date ..... 4 March 2008  
Copyright ..... DigitalGlobe  
Source ..... Google Earth  
Road Data ..... Open Street Map  
Place Names ..... Google Map Maker  
Other Data ..... MINUSTAH, USGS, NGA  
Elevation Data ..... ASTER GDEM  
Source ..... METI & NASA 2009  
Analysis ..... UNITAR / UNOSAT  
Map Production ..... UNITAR / UNOSAT  
Projection ..... UTM Zone 18 North  
Datum ..... WGS-84 (EGM-96)

Map Data © 2009 Google - Improve with Google Map Maker  
The depiction and use of boundaries, geographic names and related data shown here are not warranted to be error-free nor do they imply official endorsement or acceptance by the United Nations. UNOSAT is a program of the United Nations Institute for Training and Research (UNITAR), providing satellite imagery and related geographic information, research and analysis to UN humanitarian & development agencies & their implementing partners.

**UNITAR**  
United Nations Institute for Training and Research

**UNOSAT**

Contact Information: [unosat@unitar.org](mailto:unosat@unitar.org)  
24/7 Hotline: +41 76 487 4998  
[www.unosat.org](http://www.unosat.org)