

Flagship Partner

ENIDINE

An **IMC** Company

Enidine, Inc.

7 Centre Drive ■ Orchard Park, NY 14127 ■ USA

Phone: 716-662-1900 ■ Toll Free: 800-852-8508

Fax: 716-662-1909

Web site: www.enidine.com

Contact: Mary Q. Kerns, Seismic & ISMIS Program Manager

CEO: Christopher J. Lee, General Manager & Vice President

Principal Business: Design and Manufacture of energy absorption, vibration isolation and seismic protection products

Year Founded: 1966 ■ **Number of Employees:** 220

Other Offices: Irvine, CA; Bad Bellingen, Germany; Tokyo, Japan; West Midlands, UK

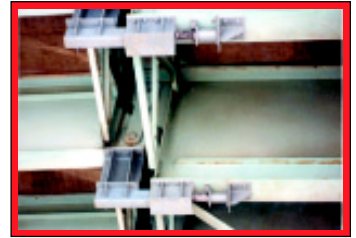
Annual Sales: Privately Held

Notable Seismic Projects:

3 COM Building, Trump Tower, Gerald Desmond Bridge, Coronado Bridge, Vancouver Reservoir

Reasons for involvement with MCEER:

Strategic partnership between academic research community with extensive experience and expertise on the science of earthquake phenomena.



- Installations of **Enidine Seismic Dampers** in the **3 COM Building**, on the **Gerald Desmond Bridge**, and **Vancouver Reservoir**.



Company Narrative:

Enidine is a global manufacturer of energy absorption, vibration isolation and motion control products, including seismic dampers, shock absorbers, rate controls, wire rope isolators, elastomeric isolators, and air spring products. The company has been a leader in the energy absorption business for over 35 years.

Enidine provides engineered solutions to everything from seismic protection products for buildings, bridges and reservoirs, to the defense industry for U.S. Navy, Army, Marines and Air Force applications, as well as commercial aviation, the U.S. Postal Service, copier lids and entertainment rides. This involves items as innocuous as the device that allows the seat on an airplane to recline, to large seismic dampers that steady a building during an earthquake.

Recently Enidine collaborated with the University at Buffalo, MCEER and the U.S. Navy on a DARPA and ONR funded program for the development of ISMIS, Intelligent Shock Mitigation and Isolation System, a semi-active isolation system for seismic protection on structures and shock protection on naval combatants. "As an intelligent system, it provides the flexibility to facilitate the utilization of commercial off-the-shelf (COTS) equipment for the military by providing the appropriate benign environment. It can also provide a distinct advantage in a wide range of seismic applications."

Enidine stresses its position as a provider of engineering solutions. Its goal is to meet the technical needs of customers.



- Enidine's **Dynamic Hydraulic Test Bench for Seismic Dampers** and facilities in **Orchard Park, New York** and **Irvine, California**.

